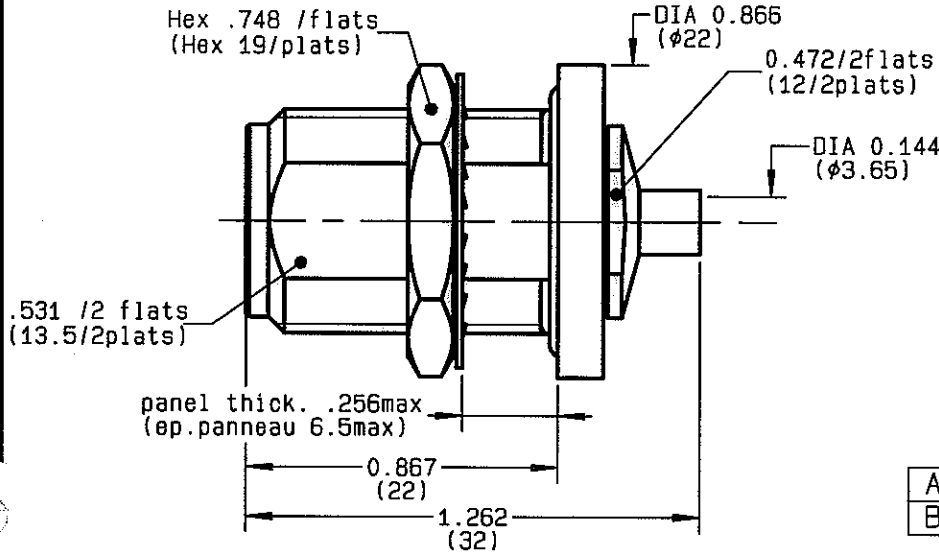
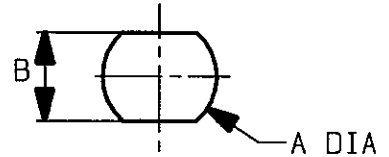


**STRAIGHT BULKHEAD JACK, PANEL SEALED
SOLDER TYPE, CABLE .141/95 PACK BY 50**

R161.336.040
SERIES **N**



PERCEGE PANNEAU
MOUNTING HOLE



	MM		INCH	
	maxi	mini	maxi	mini
A	16.1	16	0.634	0.63
B	13.7	13.6	0.539	0.535

NOMINAL IMPEDANCE	50 Ω	CABLES :	OTHERS CHARACTERISTICS	
FREQUENCY RANGE	0-11 GHz		CABLE RETENTION	500 N Mini
TEMPERATURE RATING	-65/+105 °C		CENTER CONTACT RETENTION	
V.S.W.R	NA + x F(GHz)Maxi		Axial force - mating end	NA N Mini
RF INSERTION LOSS	NA √F(GHz) dB Maxi		Axial force - opposite end	NA N Mini
VOLTAGE RATING	335 Veff Maxi		Torque	NA cm.N Mini
DIELECTRIC WITHSTANDING VOLTAGE	1000 Veff Mini		RECOMMENDED TORQUES	
INSULATION RESISTANCE	5000 MΩMini		Mating	NA cm.N
HERMETIC SEAL	NA Atm.cm ³ /s		Panel nut	500 cm.N
LEAKAGE (pressurized only)	NA		Clamp nut	150 cm.N
MECHANICAL DURABILITY	500 Cycles			
WEIGHT	gr			
SPECIFICATION				

CONNECTOR PARTS	MATERIALS	FINISH	(all values are given in micrometers)
BODY	BRASS	BBR 2	
OUTER CONTACT			
CENTER CONTACT	BERYLLIUM COPPER	GOLD 0.5 OVER NICKEL 2	
INSULATOR	PTFE	-	
GASKET		-	
OTHERS PIECES			

ISSUE	CREATION DATE	FILE PART-NUMBER
9745B00	15-JAN-96	96-0400-404



The information given here is subject to change without notice. Design changes may be in order to improve the product.

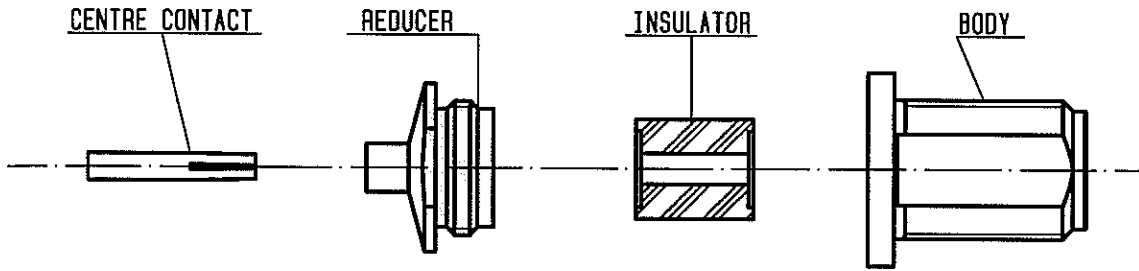
Connect to the future

MAS AND



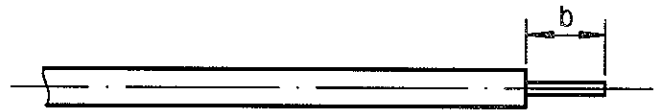
R161.336.040

ISSUE 9745B00 SERIES N



①

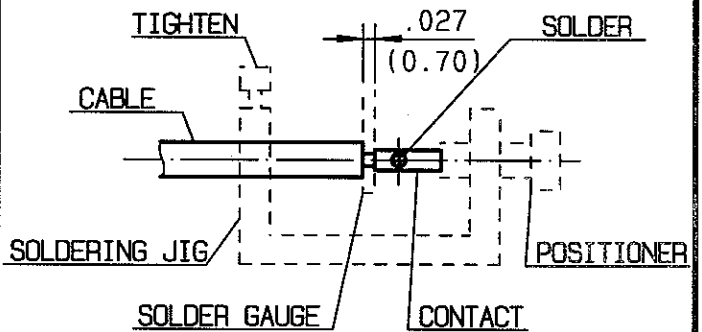
Strip the cable.
Clean the cable.



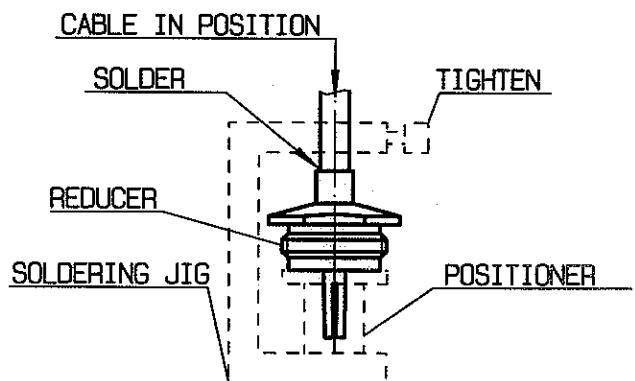
Stripping	a	b	c	d	e
inch	0	0.177	0	0	0
mm		4.5			

②

Screw the positioner R282 744 260 onto the soldering jig R 282 740 030 .
Slide contact into positioner .
Insert solder gauge R 282 862 090 between contact and cable .
Tighten and solder the contact .

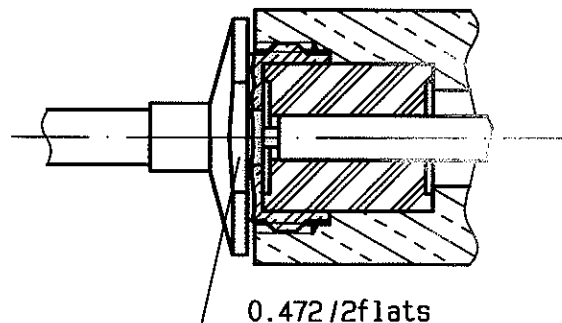


After cooling remove cable assembly from the jig .
Put positioner R282 744 310 on the soldering jig .
Slide cable into the reducer until it bottoms againsts positioner R282 744 310 .
Tighten .
Put 3 rings of solder around the cable and solder .



④

After cooling remove cable assembly from the jig .
Slide insulator into the centre contact .
Screw sub-assembly into the connector body .
(recommended coupling torque 13.27 in.lb)



MASTRAND